



Step Into the Future With Discovery Pro Visuals.



## Discovery Pro

43" LED Standard Panel

Vistech Technology, Inc

[www.vistechdisplay.com](http://www.vistechdisplay.com)

## Full range of compatible design

The cabinet is compatible with SMD, IMD or COB modules, and the different pixel pitch modules can be directly replaced and upgraded.



## Large size, slim design, endless possibilities

The structure and materials of the cabinet are specially weight-reduced to achieve an ultra-light weight of 11 kg per cabinet, bringing great convenience for transport and installation.

Thickness **39mm**      Weight **11Kg**



## Multiple technology solutions, creating infinite possibilities

Three innovative LED solutions satisfy diverse needs and enhance the viewing experience in semi-outdoor spaces.

### SMD

☀ 800nits Brightness

📺 16:9 Aspect ratio

🌈 sRGB Colour gamut

### SMD (Flip Chip Common Cathode)

☀ 4000nits Brightness

💡 40% Energy Saving

🌈 sRGB Colour gamut

☀ 5X brighter than standard SMD

### COB

☀ 800nits Brightness

💡 40% Energy Saving

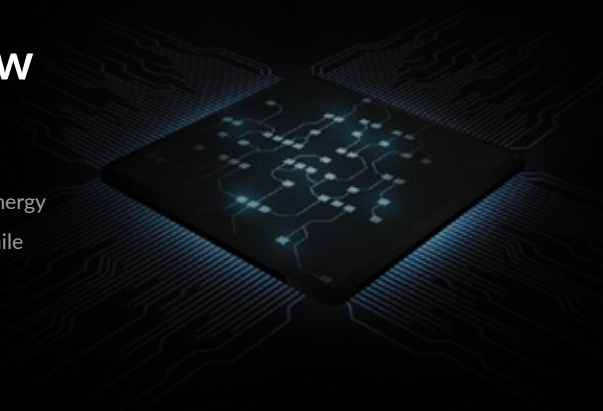
🌈 DCI-P3 Colour gamut

🌟 1,000,000:1 Contrast Ratio



## Common cathode design for low power consumption

A common cathode design allows the Vanguard series to reduce thermal energy conversion, lower screen temperature, and achieve 40% energy savings while extending screen service life.



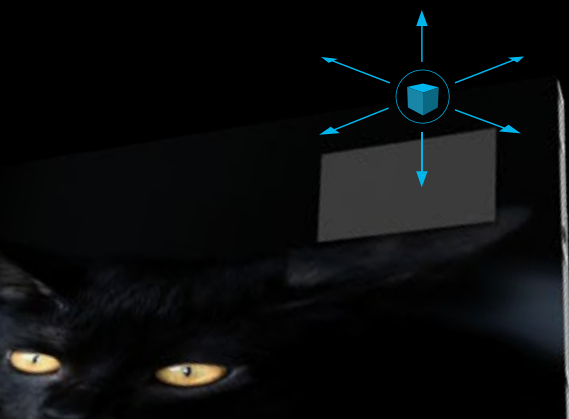
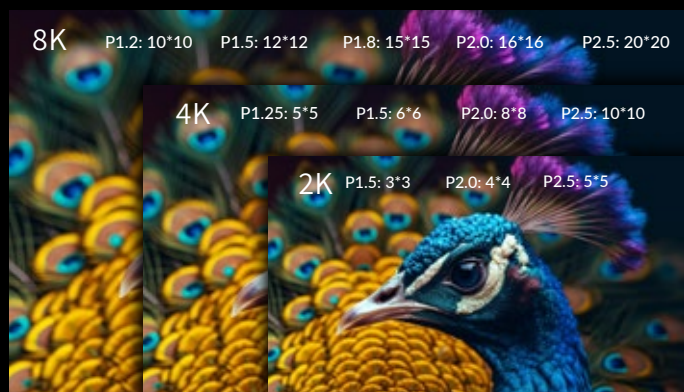
\*Optional

## 7680Hz Ultra-High Refresh Rate

The ultra-high refresh rate delivers fluid, lifelike visuals, capturing every detail of motion and reducing blurring and ghosting during high-speed movements.

## Standardized ratios for easy display of UHD/FUHD images

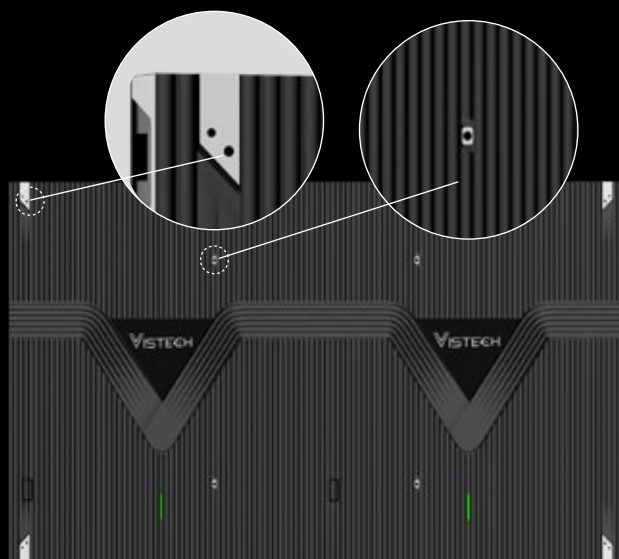
Combining the international standard 16:9 aspect ratio with the large-size panel design, the standard resolution of HD, UHD, or FUHD can be easily achieved with just a few panels.



## Customised connector, six-way adjustment

Adopting customised connectors to connect the cabinet to the module, the module can be adjusted in six directions, giving the screen superb flatness and making the visual effect guaranteed.





## Bi-directional holes on all four corners

The four corners of the cabinet have bi-directional mounting holes, allowing for fixed installation from both the front and rear, making it suitable for a variety of installation scenarios. The back of the cabinet has VESA holes to support the assembly of VESA mounts.

## Dual backup of power supply and receiving card

In the event of a failure of the main receiving card or power supply, the backup system will automatically switch over to ensure that the display is not interrupted, providing stronger stability and reliability for the large-screen display.



## Perfect replacement for LCDs

Fully replace traditional 43" LCD splicing screens without changing the original installation structure.

**Ultra-wide Colour Gamut for Vibrant Colours**

**Seamless Splicing for True-to-life Images**

## SPECIFICATIONS

Model	C95-09VA	C95-12VA	U95-09VA	U95-12VA	U95-15VA	U95-18VA	U95-20VA	U95-25VA	U95-12VH	U95-15VH	U95-18VH	U95-20VH	U95-25VH	U95-18VP
Pixel Pitch(mm)	P0.9	P1.2	P0.9	P1.2	P1.5	P1.8	P2.0	P2.5	P1.2	P1.5	P1.8	P2.0	P2.5	P1.8
Unit Size (W × H × D) (mm)	960*540*39													
Resolution	1024*576	768*432	1024*576	768*432	640*360	512*288	480*270	384*216	768*432	640*360	512*288	480*270	384*216	512*288
Panel Technology	COB	COB	IMD 4 in 1	SMD	SMD	SMD	SMD	SMD	SMD (Flip Chip Common Cathode)					
Brightness(nits)	800	800	800	600	600	800	800	750	4000	4000	3500	1350	1100	1000
Contrast Ratio	1000000:1	1000000:1	4000:1	4000:1	4000:1	4000:1	4000:1	4000:1	8000:1	8000:1	8000:1	5000:1	5000:1	6000:1
Colour Temperature	3000K±~9300K(adjustable)													
Frame Rate(Hz)	60													
Refresh Rate(Hz)	3840													7680
Working Voltage	AC:100~240V, 50/60Hz													
Power Consumption Max(W/m²)	500	480	600	550	550	550	450	450	500	500	450	240	240	400
Lifetime(Hours)	100000													
Operating Temp(°C)	-10~50													
Humidity Range (%RH)	10~80													
Cabinet Weight (kg)	11													