

ELO Series Outdoor LED Panel



Incredible clarity and vibrant colors

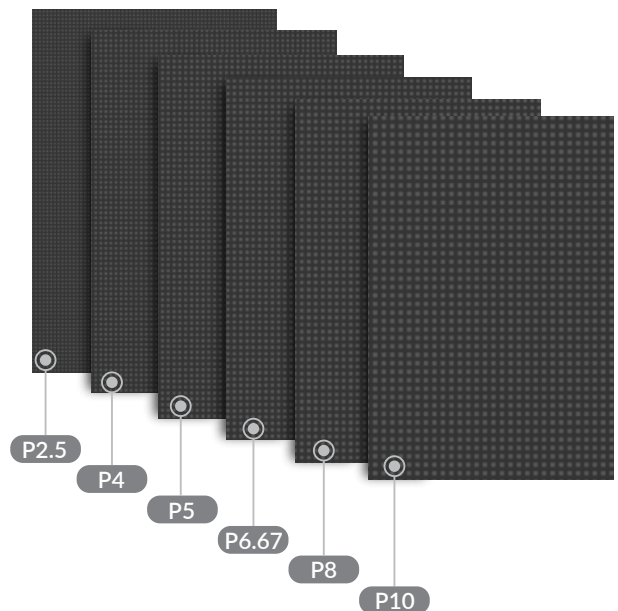
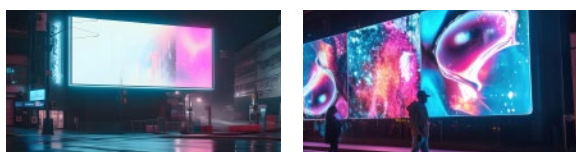
The ELO series utilizes 320x160 outdoor LED modules and a standard 960x960mm sheet metal cabinet, providing a highly flat screen while presenting extraordinary visuals.

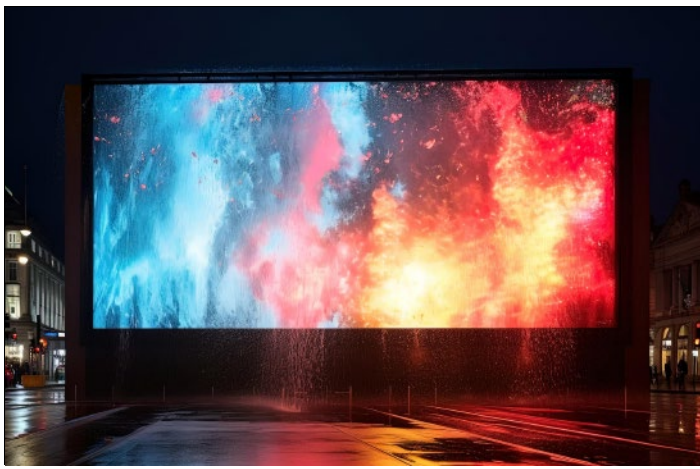
Innovative waterproof design

The module back cover is equipped with a waterproof silicone ring, providing a more reliable waterproof guarantee for the screen.

Diverse pixel pitch options: choose from P2.5 to P10

To meet the needs of different application scenarios, we offer a range of pixel pitches to choose from. Whether you need high-definition and intricate visuals or larger-scale advertising displays, the ELO series can be tailored to your needs.





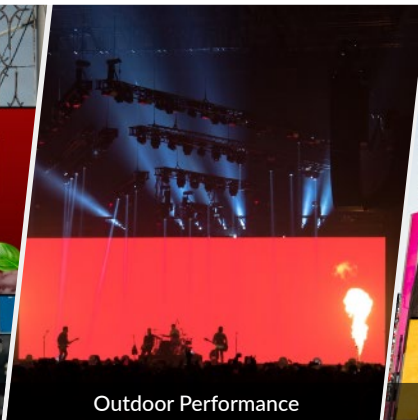
IP65 protection level, unfazed by any outdoor challenge

With an IP65 protection rating, the ELO series easily withstands storms, typhoons, salt spray, and other harsh weather.

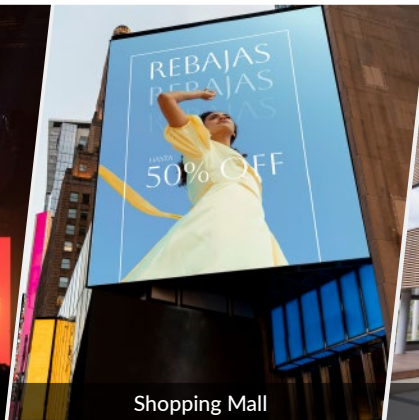
Multiple Applications



Billboard



Outdoor Performance



Shopping Mall



Commercial Center

SPECIFICATIONS

Model	D99-2P5VC	D99-4PVC	D99-5PVC	D99-6P6VC	D99-8PVC	D99-10PVC
Pixel Pitch(mm)	P2.5	P4	P5	P6.67	P8	P10
Resolution	384*384	240*240	192*192	144*144	120*120	96*96
Cabinet Size(W × H × Dmm)	960 × 960 × 119	960 × 960 × 119	960 × 960 × 119	960 × 960 × 119	960 × 960 × 119	960 × 960 × 119
Module Size(W × H) (mm)	320 × 160	320 × 160	320 × 160	320 × 160	320 × 160	320 × 160
Cabinet Weight (kg)	40	40	40	40	40	40
IP Rate	IP65	IP65	IP65	IP65	IP65	IP65
Brightness(nits = cd/m ²)	4500	5500	5000	5500	5500	5500
Contrast Ratio	8000:1					
Frame Rate(Hz)	60					
Refresh Rate(Hz)	3840					
Colour Temperature(K)	3000 ~ 9300(adjustable)					
Viewing Angle(H./V.)	160°/140°					
Peak Power Consumption(W/m ²)	850	850	850	850	800	800
Average Power Consumption(W/m ²)	285	285	285	285	270	270
Working Voltage	AC: 100V ~ 240V, 50/60Hz					
Lifetime(Hours)	100000					
Operating Temp(°C)	-20 ~ 50					
Humidity Range(%RH)	10 ~ 90					