



IRIS Air Series

LED All-in-One

108"/135"/163"/216"

216"

Large Screen

108"/135"/163"/216"

Master large-scale conferences effortlessly.



800nits

Brightness

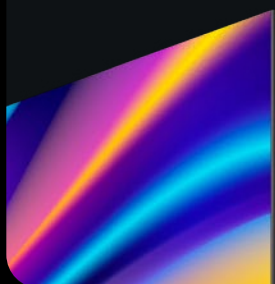
Experience stunning visuals with unique circuit design.

FHD

Enjoy standard FHD super clear images.

31mm

Ultra-narrow bezel screen for a modern look.



Android 11.0 4GB+32GB

Powerful Performance

Eight-core processor, high-performance GPU, and built-in Android system (optional Windows system).

Windows system (optional)

16:9

16:9 Standard Aspect Ratio

*Optional



Infrared Touch

High-precision touch for efficient meetings.



Screen Mirroring

Display up to 4 screens simultaneously.



Abundant Interfaces

Built-in high-quality speakers and various I/O interfaces for external devices.

*Optional



Write Freely

Built-in whiteboard for easy, interactive presentations.



Smart Meetings

Built-in whiteboard, video conferencing, and more.



Four display modes

Standard, Soft, Cinema, Video - 4 modes.

Efficient meetings intelligent office.

- Light and slim
- Fast and efficient
- Smart collaboration



Wall-mounted



Mobile stand



Front service

SPECIFICATIONS

Model	S108LEDVF-FSN	SR108LEDVF-FSN	S135LEDVF-FSN	SR135LEDVF-FSN	S163LEDVF-FSN	SR163LEDVF-FSN	S216LEDVF-FSN
Display Size	108"	108"	135"	135"	163"	163"	216"
Resolution	1920*1080	1920*1080	1920*1080	1920*1080	1920*1080	1920*1080	1920*1080
Aspect Ratio	16:9	16:9	16:9	16:9	16:9	16:9	16:9
Touch control	No	Infrared touch	No	Infrared touch	No	Infrared touch	No
Overall Dimensions (W x H x D mm)	2410 x 1480 x 31 Bottom Thickness 47	2423 x 1487 x 45 Bottom Thickness 47	3010 x 1817.5 x 31 Bottom Thickness 47	3023 x 1824 x 45 Bottom Thickness 47	3610 x 2155 x 31 Bottom Thickness 47	3623 x 2161 x 45 Bottom Thickness 47	4810 x 2830 x 31 Bottom Thickness 47
Actual Screen Dimensions (W x H mm)	2400 x 1350	2400 x 1350	3000 x 1687.5	3000 x 1687.5	3600 x 2025	3600 x 2025	4800 x 2700
Installation Method	Mobile Stand/Wall Mounting						Wall Mounting
Refresh Rate(Hz)	3840						
Brightness(nits)	750	750	600	600	800	800	800
Gray Scale(Bit)	18						
Contrast Ratio	4000:1						
Viewing Angle(H./V.)	160°/160°						
Maintenance Method	Front						
Operating System	Android 11.0, 4+32G						
Working Voltage	AC:100V~240V, 50/60Hz						
Power Consumption Max(W)	2200	2000	3100	1850	2450	2450	4600
Power Consumption AVG(W)	670	670	1040	620	820	820	1550
Storage Temp(°C)	-20 ~ 60						
Operating Temp(°C)	-10 ~ 50						
Storage Humidity (%RH)	10 ~ 90						
Operating humidity (%RH)	10 ~ 80						