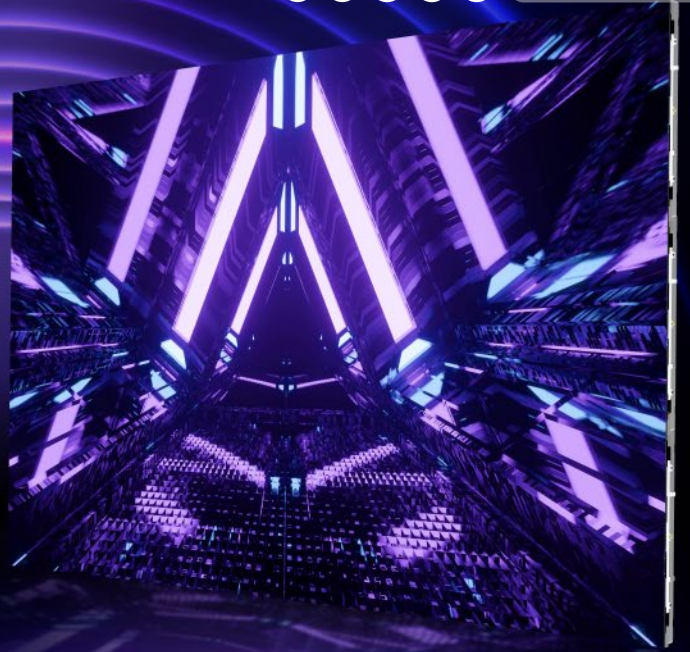


## IRIS SERIES Micro LED (High-Brightness)

Realistic visuals with vivid and vibrant colors



### Amazing compact and streamlined design

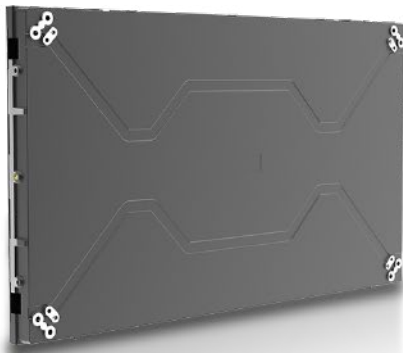
Ultra-thin 31mm cabinet, just 4.5kg in weight.

### Cutting-edge full flip-chip COB technology

Enjoy the unrivalled visual experience while providing strong protection against external impacts.

### Perfect 16:9 aspect ratio

Get maximum flexibility as you can splice FHD, UHD and FUHD screens at random!



Grayscale:  
**22 bit+**

Colour Gamut:  
**DCI-P3**

Brightness:  
**1000 nits**

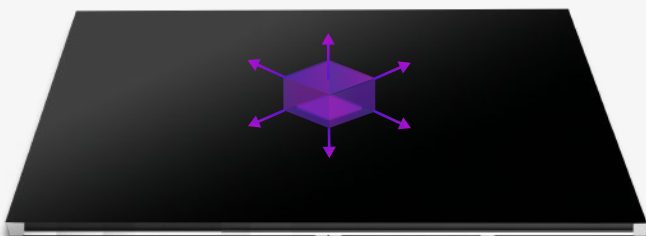
Contrast Ratio:  
**1000000:1**



### ► Dark as ink, smooth as a mirror

The module adopts a matte black finish treatment, ensuring a uniform and consistent ink-like colour.

The customized connectors combined with the magnets on the cabinet allow the module to adjust in three axes and six directions, ensuring a perfectly flat screen surface.



### ► Dual backup, multiple protection

The receiver card and power supply both support dual backups. If the signal receiver or power module fails, it will automatically switch to the backup module to ensure normal display and provide protection for continuous display.



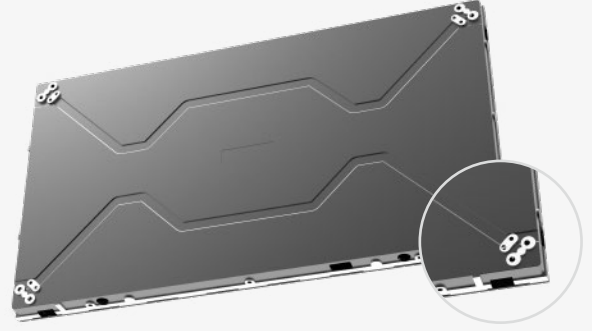
## ► Full front maintenance

Using a suction cup tool, the module can be easily dismantled and installed, improving maintenance efficiency. No maintenance channel is required, saving installation space.



## ► Unique hole positions, various installation options

The four corners of the cabinet have front and rear bi-directional mounting holes, supporting fixed mounting, wall mounting and other installation options, suitable for various installation environments.



Excellent Picture Quality



Cable Free Design



Energy Saving



Full Flip-Chip COB



Seamless Splicing



High Protection

## SPECIFICATIONS

Model	C63-09VF(H)	C63-12VF(H)	C63-12VF(P)	C63-15VF(H)
Pixel Pitch(mm)	P0.9375	P1.25	P1.25	P1.5625
Resolution	640*360	480*270	480*270	384*216
Panel Technology	Full flip-chip COB			
Unit Size (W × H × Dmm)	600 x 337.5 x 31			
Surface Treatment	Matte black finish			
Brightness(nits)	1000	1000	1000	1000
Contrast Ratio	≤1000000:1			
Colour Temperature(K)	3000 ~ 9300(adjustable)			
Frame Rate(Hz)	60			
Refresh Rate(Hz)	3840			
Working Voltage	AC:100V ~ 240V,50/60Hz			
Power Consumption Max(W/m <sup>2</sup> )	200	250	250	250
Power Consumption AVG (W/m <sup>2</sup> )	70	85	85	85
Viewing Angle(H./V.)	170°/170°			
Lifetime(Hours)	100000			
Operating Temp(°C)	-10 ~ +50			
Humidity Range(%RH)	10 ~ 80			
Unit Weight(kg)	4.5			