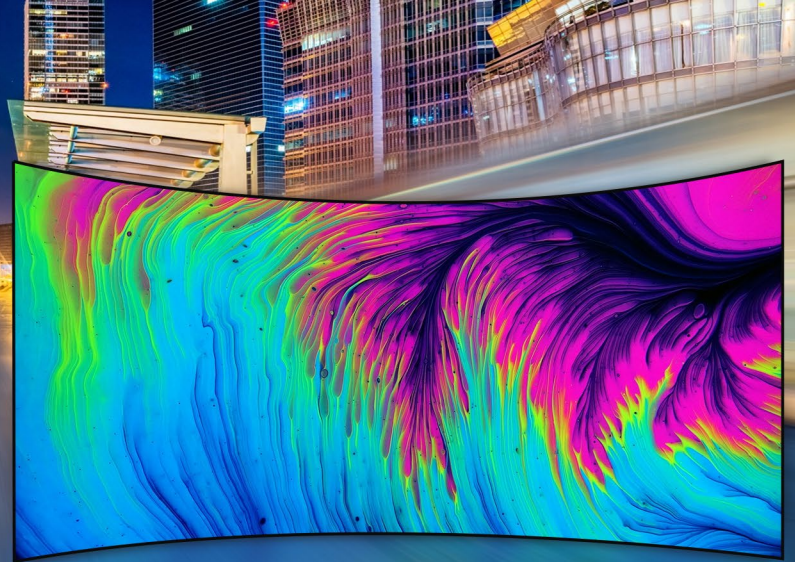


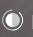
# Flow Series LED

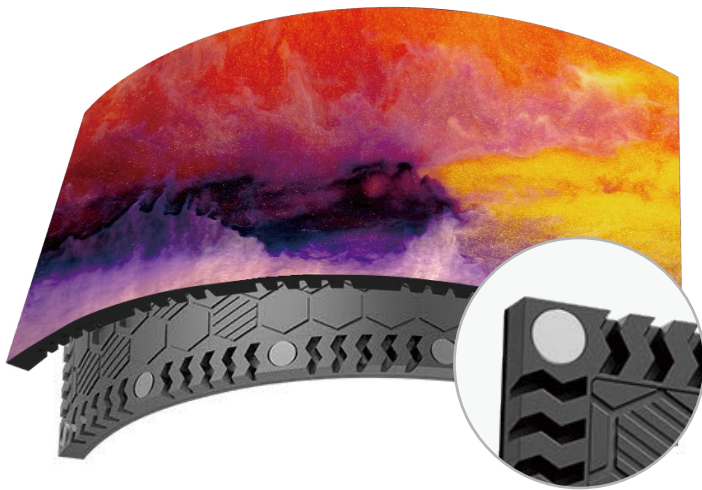
Outdoor Flexible Module Solution

P4mm



VISTECH

 Low Current  Low Heat  High Contrast **3840** High Refresh Rate



## Standard size, different display

The 320x160mm standardised module size design adopts a low power consumption display, achieving high contrast and high refresh rate image display.

## Powerful absorption, smooth as a mirror

The single magnet in the bottom cabinet can contain up to 2500GS, which enables the module to fit closely to the cabinet, effectively enhancing the flatness of the screen surface and ensuring the display effect.

## Flexible Material, Curved Splicing

The PCB board uses flexible board, and the back casing uses silicone material to easily realise the inner and outer curved surface screens.

## Comprehensive protection, safe and reliable

The module has a protective cover on the lamp surface to effectively protect the lamp beads from solid dust. The removable bottom casing back cover allows for better protection of the components on the back of the module.

The module also contains a fall arrest safety rope to prevent the module from falling due to strong outdoor winds or installation work at height.



## Variety of assembly methods



Inner arc



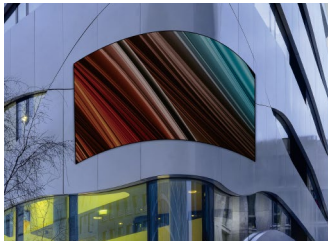
Outer arc



Corner

## Multiple application scenarios

Shopping Centre ,Exhibition Hall ,Central Plaza ,Luxury Hotel.



## SPECIFICATIONS

|   |                          |
|---|--------------------------|
| Module Size (W×H×D)/(mm)                      | 320x160x12mm             |
| Model   | DMS3216-4A               |
| Pixel Pitch (mm)                              | P4                       |
| LED type                                      | SMD1921                  |
| Module Resolution                             | 80 x 40                  |
| Module Weight(g)                              | 600                      |
| Grey Scale(Bits)                              | 12                       |
| Brightness(cd/m <sup>2</sup> )                | 5000                     |
| Colour Temperature                            | 2500K±~9000K(adjustable) |
| Refresh Rate (Hz)                             | 3840                     |
| Power Consumption Max (W/m <sup>2</sup> )     | 600                      |
| Power Consumption Typical (W/m <sup>2</sup> ) | 200                      |
| Working Voltage                               | AC:100V~240V, 50/60Hz    |
| Lifetime(Hours)                               | 100,000                  |
| Operating Temp(°C)                            | -20 ~ +60                |
| Humidity Range(%RH)                           | 10 ~ 90                  |