

# Flow Series LED

## Indoor Flexible Module Solution

320x160mm/256x128mm/240x120mm  
P0.9375~P4



VISTECH

Low Current Low Heat High Contrast 3840 High Refresh Rate

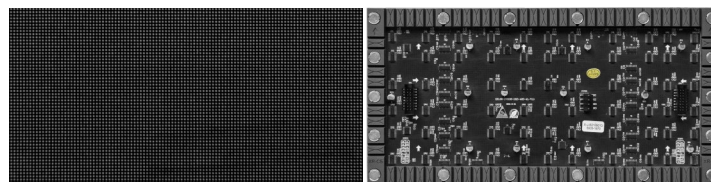
### Thin to the extreme, flexible beyond compare

Featuring an 8.6mm ultra-thin module with a flexible internal PCB board and a silicone back casing, the Flow Series is highly flexible and can be combined with various curved screens at will.



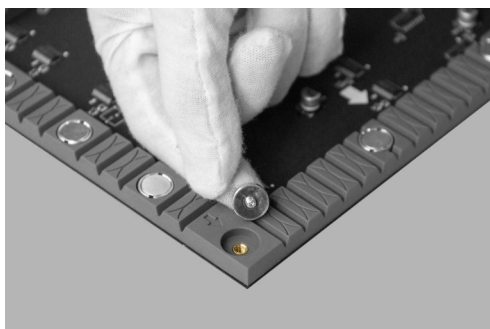
### Three sizes, fully covered

The Flow Series indoor LED flexible module is available in 320x160mm, 256x128mm, and 240x120mm sizes, covering a wide range of pixel pitches from P0.9375 to P4 to meet the needs of different project scenarios.



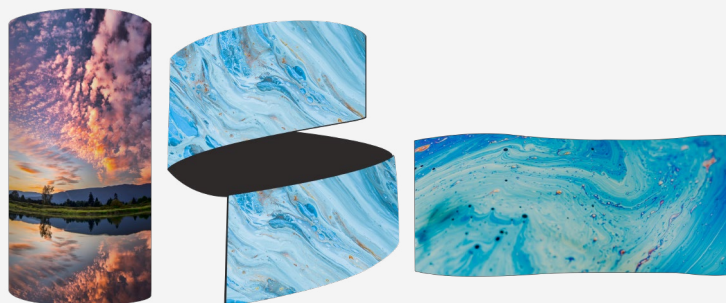
### Strong adsorption, smooth as a mirror

The single magnet in the bottom enclosure can contain up to 2500GS, which solves the problem of debonding and warping in regular flexible modules, effectively improving the flatness of the screen surface and ensuring the display effect.



### Flexible and versatile, unlimited creativity

With its high flexibility and large angle, the Flow Series indoor LED flexible module can realise cylindrical, spiral, wave, ribbon, and other fantastic artistic shapes, bringing a marvellous visual experience.



# SPECIFICATIONS

Module Size(W×H×D)/(mm)	320 x 160 x 8.6mm							
Model	UMS3216-1.25A	UMS3216-1.29A	UMS3216-1.56A	UMS3216-1.86A	UMS3216-2A	UMS3216-2.5A	UMS3216-3A	UMS3216-4A
Pixel Pitch (mm)	P1.25	P1.2903	P1.5686	P1.8605	P2	P2.5	P3.0769	P4
LED type	SMD1010	SMD1010	SMD1212	SMD1515	SMD1515	SMD1515	SMD1515	SMD2020
Module Resolution	256x128	248 x 124	204 x 102	172 x 86	160 x 80	128 x 64	104 x 52	80 x 40
Module Weight(g)	330	400	340	340	340	290	290	280
Grey Scale(Bits)	13 ~ 14	13 ~ 14	13 ~ 14	12 ~ 13	12 ~ 13	12	12	12
Brightness(cd/m <sup>2</sup> )	600 ~ 650	600 ~ 650	600 ~ 650	700 ~ 750	700 ~ 750	700 ~ 750	650 ~ 750	700 ~ 750
Colour Temperature	2500K±~9000K(adjustable)							
Refresh Rate (Hz)	3840	3840	3840	3840	3840	1920 ~ 3840	1920	1920
Power Consumption Max (W/m <sup>2</sup> )	600	600	440	430	450	410	410	360
Power Consumption Typical (W/m <sup>2</sup> )	200	200	150	145	150	140	140	120
Working Voltage	AC:100V~240V, 50/60Hz							
Lifetime(Hours)	100,000							
Operating Temp(°C)	-10 ~ +50							
Humidity Range(%RH)	10 ~ 80							

Module Size(W×H×D)/(mm)	256x128x8.6mm	
Model	UMS2512-2A	UMS2516-4A
Pixel Pitch (mm)	P2	P4
LED type	SMD1515	SMD2020
Module Resolution	128 x 64	64 x 32
Module Weight(g)	225	195
Grey Scale(Bits)	12 ~ 13	12
Brightness(cd/m <sup>2</sup> )	750 ~ 800	800 ~ 850
Colour Temperature	2500K±~9000K(adjustable)	
Refresh Rate (Hz)	3840	1920
Power Consumption Max (W/m <sup>2</sup> )	490	490
Power Consumption Typical (W/m <sup>2</sup> )	165	165
Working Voltage	AC:100V~240V, 50/60Hz	
Lifetime(Hours)	100,000	
Operating Temp(°C)	-10 ~ +50	
Humidity Range(%RH)	10 ~ 80	

Module Size (W×H×D)/(mm)	240x120x8.6mm								
Model	UMS2412-0.93A	UMS2412-1.25A	UMS2412-1.57A	UMS2412-1.66A	UMS2412-1.87A	UMS2412-2A	UMS2412-2.5A	UMS2412-3A	UMS2412-4A
Pixel Pitch (mm)	0.9375	P1.25	P1.5789	P1.6667	P1.875	P2	P2.5	P3	P4
LED type	IMD 4 in 1	SMD1010	SMD1212	SMD1212	SMD1515	SMD1515	SMD1515	SMD2020	SMD2020
Module Resolution	256 x 128	192 x 96	152 x 76	144 x 72	128 x 64	120 x 60	96 x 48	80 x 40	60 x 30
Module Weight(g)	220	220	210	200	217	210	190	200	175
Grey Scale(Bits)	13 ~ 14	13 ~ 14	13 ~ 14	13~14	12~13	12~13	12	12	12
Brightness(cd/m <sup>2</sup> )	500 ~ 550	600 ~ 650	700 ~ 750	700 ~ 750	750 ~ 800	750 ~ 800	750 ~ 800	850 ~ 900	800 ~ 850
Colour Temperature	2500K±~9000K(adjustable)								
Refresh Rate (Hz)	2880~3840	3840	3840	3840	3840	3840	1920 ~ 3840	1920	1920
Power Consumption Max (W/m <sup>2</sup> )	490	560	490	490	490	490	460	490	460
Power Consumption Typical (W/m <sup>2</sup> )	165	190	165	165	165	165	155	165	155
Working Voltage	AC:100V~240V, 50/60Hz								
Lifetime(Hours)	100,000								
Operating Temp(°C)	-10 ~ +50								
Humidity Range(%RH)	10 ~ 80								